

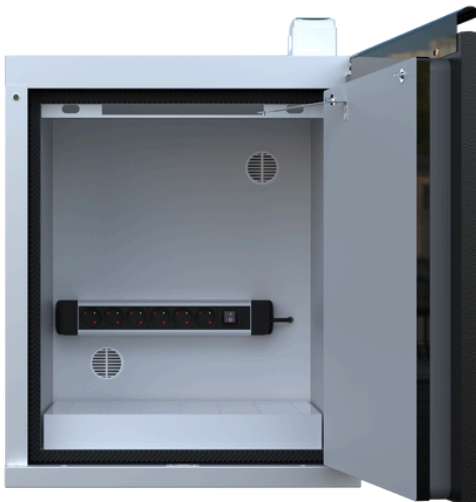
## Technical Data Sheet | CH-L6PGK

### LithiumVault Cabinet with Charging | 1-Door | Short

Cabinet designed for storing and charging lithium-ion batteries, certified for 90-minutes of fire protection, according to EN 14470-1 TYPE 90 standard.

#### Product Specifications

External Dimensions (WxDxH)	595 x 520 x 720mm
Internal Dimensions (WxDxH)	483 x 349 x 593mm
Shelf Dimensions (WxDxH)	482 x 323 x 39mm
Number of Shelves	1 x gridded spill tray
Shelf Load Capacity	60kg
Doors (Door Locks)	1 (1 with 2 x keys supplied)
Charging Points	6 (1 x power socket)
Tare Weight	87kg (empty cabinets, excl. accessories)
Power Socket	Standard Regional Socket
Power Phase	Single
Cable Section	2m 3G2.5mm <sup>2</sup>
Max Amp. Output	10A
Voltage	230V
Max Output	2,300W



#### Product Features and Benefits

- 90-Minutes Fire Rated
- Steel Construction
- Anti-spark hinges
- Ventilation
- Self-closing door system
- LPCB Certified to EN 12094-1 and EN 54-2 and 4 and EN 14470-1 TYPE 90
- Charging sockets with 16A circuit breaker and illuminated on/off safety switch